

THIS LACQUERED  
FINISH  
IS ACTUALLY  
WALLPAPER!

# KEEPING the

Interior designer COREY DAMEN JENKINS / architect TR DESIGN GROUP / writer EMMA BAZILIAN  
photographer WERNER STRAUBE / producer ROBERT RUFINO / stylist HILARY ROSE

## GREAT ROOM

**Door paint color:** Navy  
**Masterpiece:** Benjamin Moore.  
**Bench fabric:** Schumacher.  
**Pillow fabric:** Kravet.

<

## PARLOR

Phillip Jeffries's lacquered wallcovering is a smart choice for spaces that get a lot of use, like this "flex room" where the kids do homework. "If someone draws on it, it's a lot easier to repair than real lacquer!" says designer Corey Damen Jenkins. **Chandelier:** Arteriors. **Lamps:** Currey & Company. **Art:** Cloth & Kind. **Credenza:** clients' own. **Curtains:** Kravet. **Table:** Mercury Row. **Chairs:** Langley Street. **Sofa:** vintage. **Rug:** West Elm.

# PEACE

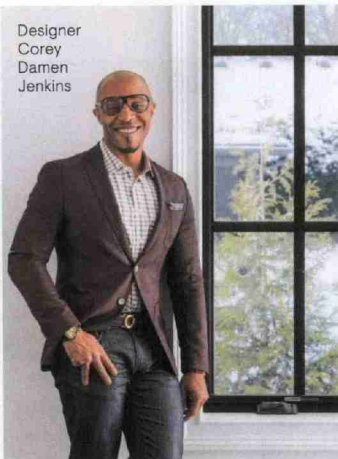
An asset for any designer  
marrying two style  
sensibilities under one roof:  
a politician-like gift for  
diplomatic compromise.



HOW TO MAKE  
PANELING LOOK  
FRESH? SKIP  
THE STANDARD  
CHAIR RAIL.



Designer  
Corey  
Damen  
Jenkins



#### IF COREY DAMEN JENKINS

weren't an interior designer, he'd probably be working in fashion or running for political office—"my other great loves!" he says. After all, it was both a couture-level attention to detail and statesman-like approach that made his recent project for a Michigan family a success.

The homeowners, who were in the early stages of building a new house, contacted Jenkins after seeing his colorful, neo-traditional work in a magazine. "They'd gone on my website and watched my videos," he recalls. "They told me, 'We like you as a person, but can you do something that's more streamlined and modern?'"

"I was actually grateful to *not* do something super-traditional!" the designer admits. The real challenge, he discovered after meeting the couple, would be in marrying their "very disparate" aesthetic points of view. "The wife loved jewel tones and embellishment, while the husband was on the total opposite end of the spectrum—no color, no wallpaper, no window treatments," Jenkins explains. "The question was, how do

you bring those things together in a way that feels cohesive?"

The answer: serious negotiations. "I'd do a clean-lined sofa for him, but in an emerald green velvet for her. Then she'd want nailhead trim, which seemed too traditional to him, so we'd do it in polished chrome, which made it modern," he recalls. "It was a tug-of-war, but it was fun!"

Those sorts of creative compromises abound throughout the house. To appease the husband's aversion to window treatments—without sacrificing privacy—Jenkins installed motorized blinds that are concealed against the window frame when not in use. The decorative molding in the living room is a flat stock instead of ogee, so it feels geometric instead of fussy. And when the wife asked for classic panels in the dining room, Jenkins obliged but in a 1970s-inspired grass cloth with a mod chandelier.

Jenkins's aesthetic is visible in the finished home, but it's his clients' personalities that shine through. "**I always say that I approach design like a doctor delivering a baby: At the end of the day, it's not my kid—it's yours, and it should look like you,**" he laughs. "After all, you're the ones taking it home!" ■

#### < DINING ROOM

"You see this room as soon as you walk in, so I used it as an opportunity to introduce the palette in a strong way," Jenkins says. **Ceiling and wallcovering:** Kravet. **Chandelier:** Visual Comfort. **Table:** Caracole. **Armchairs:** Hickory Chair in a GP&J Baker fabric. **Side chairs:** Hickory Chair. **Roman shade:** Kravet (fabric) and Robert Allen (trim).

#### > DINING ROOM

**Credenza:** Theodore Alexander. **Mirror:** Renwil. **Lamps:** Visual Comfort. **Sculpture:** Global Views.





## GREAT ROOM

PPG's Garlic Clove has enough warmth to counterbalance the bright white of the often-snowy landscape. **Chandeliers:** Arteriors (left), The Urban Electric Co. (right). **Sofa:** custom, **Chairs:** Hickory **Chair,** **Cocktail table:** RH. **Rug:** Stark. **Dining table:** Design Within Reach. **Dining chairs:** Bernhardt. **Ceiling paint:** Revere Pewter, Benjamin Moore.

CURVES ON THE  
CEILING MOLDING  
KEEP THE EYE  
MOVING THROUGH  
THE ROOM.





**FOYER LOFT**  
**Pendant:** Visual Comfort. **Sconces:** The Urban Electric Co. **Table:** West Elm. **Chairs:** Mercury Row. **Storage unit:** custom, built by Designer Furniture Services.



**MASTER BEDROOM**  
 Jenkins envisioned the parents' room as a hotel suite—there's even a coffee-maker! **Wallcovering:** Lindsay Cowles. **Chandelier:** Arteriors. **Curtains and bed:** Kravet. **Bench and chair:** Hickory Chair. **Nightstands:** Theodore Alexander. **Rug:** Stark.

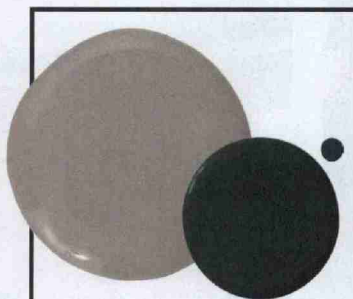


>  
**ENTRY NOOK**

"With all the white walls and 18-foot ceilings, I was able to get away with bringing in some bold wallcoverings," says Jenkins, who chose a graphic **Phillip Jeffries** pattern for a cozy niche off of the foyer. **Art** and **table**: **Cloth & Kind**. **Bench**: **Kravet**. **Pillow fabrics**: **Schumacher**.

>  
**KITCHEN**

The graphic granite counter in the kitchen was "a bit of a sell," admits Jenkins. "I told the clients to look at it as art. Of course, now it's their favorite thing." **Cabinetry**: **Stoffer Home** with **Armstrong** hardware. **Island and countertops**: San Simone honed quartzite. **Pendants**: **Visual Comfort**. **Sconces**: **Arteriors**. **Stools**: **Design Within Reach**. **Faucet**: **Kohler**. For more details, see **Resources**.



*The Neutral Zone*

As a Michigan-based designer, Jenkins is well-versed in creating homes that are cozy, even during a long, cold winter. Warm whites and grays (try **Benjamin Moore's** Revere Pewter) and smile-inducing brights, like Navy Masterpiece, are his go-tos.





THIS MARBLE WAS IMPOSSIBLE TO MATCH AT THE SEAMS, SO JENKINS ADDED STRIPS OF TEAK WOOD.