

As Simple as Black & White

But is there anything simple about a clean classic? Black and white go together like pearls and satin, as proven by these stunning designs.



Caracole

To the Four Corners

Quatrefoil, or four leaves, is a classic pattern of four overlapping circles popularized in Gothic architecture. These designs showcase that luck of the draw.



Palu



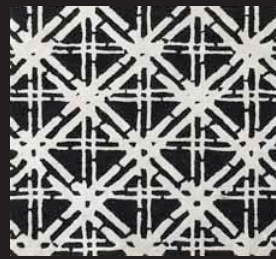
Tourmaline



Uttermost



Regina Andrew



Feizy



Mr. Brown



Chelsea House
by Lisa Kahn



11

Look for:
 Stripes and pattern
 Crisp details
 Stark combinations

Look for:
 Classic design
 Four lobes
 Soft circles