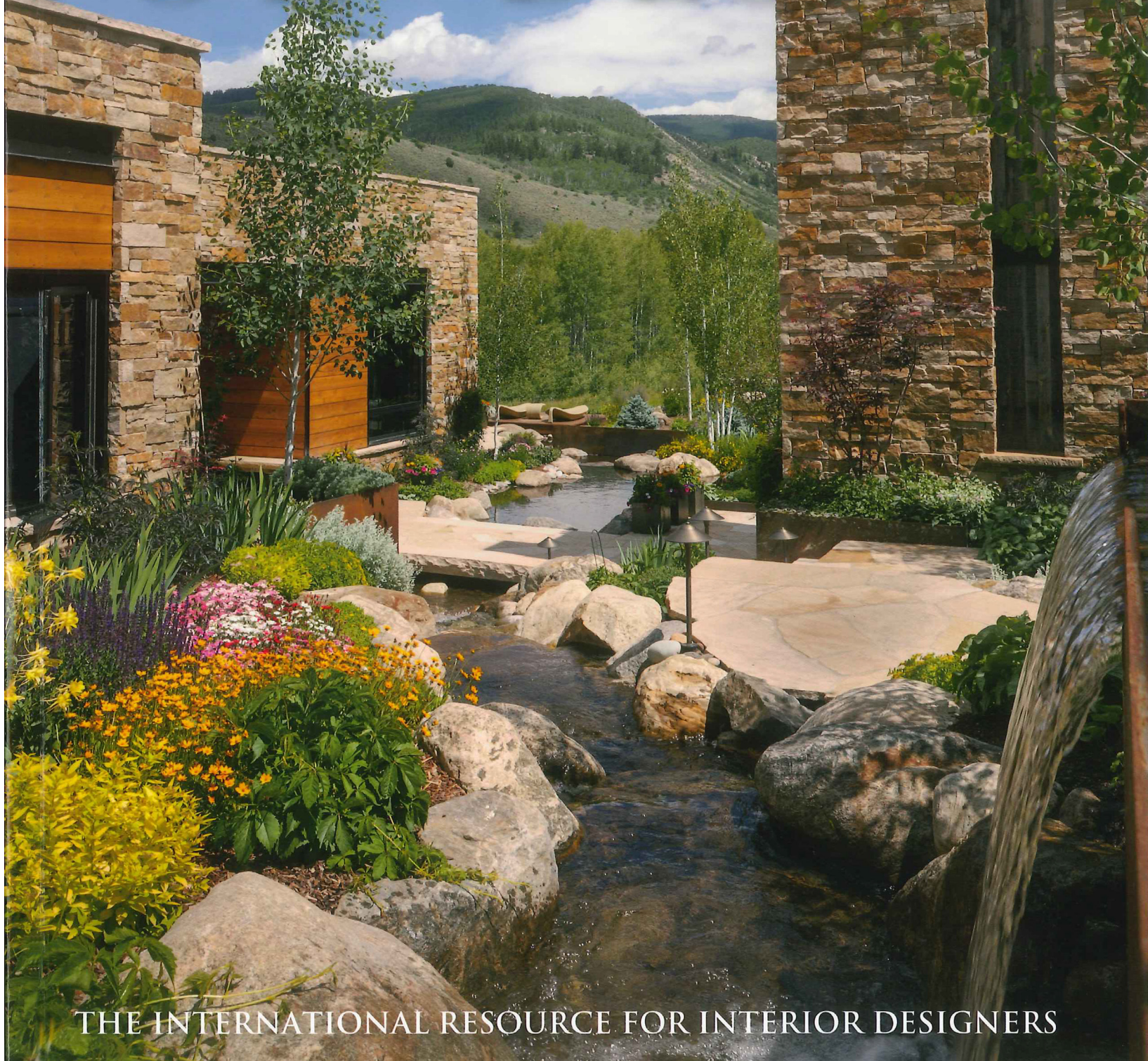


SPRING 2016

£4.50 \$10

# BRIDGE FOR DESIGN



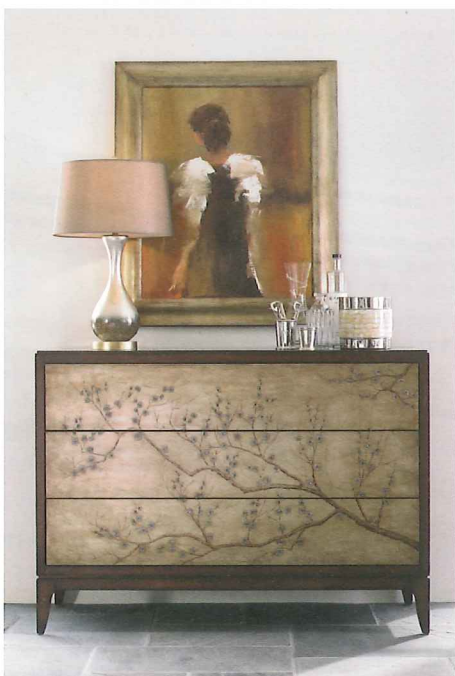
THE INTERNATIONAL RESOURCE FOR INTERIOR DESIGNERS



## High Point preview



UPHOLSTERED IN Caswell Fog fabric resembling suede, **Jessica Charles'** Cagney Settee's petite footprint makes it versatile in any space, as a loveseat in small environments or entryway seating. Shallow button tufting and "Slate" wood finish legs break up the monochromatic palette. T: 001 828 495 1950 | [www.jessicacharles.com](http://www.jessicacharles.com)  
HW 200 Steele St, Floor 3



AWESOME BLOSSOM by **Caracole** is spring chic! This rich mahogany storage piece boasts a brilliant gold leaf chinoiserie facade hand-painted with delicate cherry blossom branches. Swarovski crystals are placed on the center of a few key blossoms so that the piece almost winks at you as you walk by. T: 001 800 468 8730 | [www.caracole.com](http://www.caracole.com)  
IHFC C-500



**BRAXTON CULLER**, known for its meticulous attention to detail and quality construction offers an extensive product line for the entire home including patio and outdoors. The stylish Grand Haven sofa group (pictured) is indicative of the company's designs for the elegant and casual lifestyle. With legs available in a variety of finishes, the sofa is standard with four Blendown seat cushions and four Blendown pillows as well as a wide fabric selection. T: 001 336 861 5800 | [www.braxtonculler.com](http://www.braxtonculler.com) | 310 S. Elm St.



THIS SLEEK and space-efficient rectangular pedestal table by Fine Furniture Design, shown in Patina white, is perfect for an eat-in kitchen or open floor plan. Coordinating upholstered banquette seating includes a double-seat, single-seat and right-and-left corner pieces, creating ultimate versatility. T: 001 336 883 9918 | [www.ffdm.com](http://www.ffdm.com)  
305 S. Hamilton St.